

## MLS Area GTW

Listings	This Month			Year-to-Date		
	Dec 2021	Dec 2020	Change	2021	2020	Change
Single Family Sales	199	268	-25.7%	2,454	2,543	-3.5%
Condo/TH Sales	5	6	-16.7%	77	32	+140.6%
<b>Total Sales</b>	<b>204</b>	<b>274</b>	<b>-25.5%</b>	<b>2,531</b>	<b>2,575</b>	<b>-1.7%</b>
New Homes Only	27	42	-35.7%	210	369	-43.1%
Resale Only	177	232	-23.7%	2,321	2,206	+5.2%
Sales Volume	\$113,753,591	\$115,672,297	-1.7%	\$1,296,309,376	\$999,146,745	+29.7%
New Listings	129	155	-16.8%	2,634	2,659	-0.9%
Pending	--	--	--	--	--	--
Withdrawn	1	4	-75.0%	11	97	-88.7%
Expired	1	4	-75.0%	11	97	-88.7%
Months of Inventory	0.4	0.6	+16.8%	N/A	N/A	--

Average	This Month			Year-to-Date		
	Dec 2021	Dec 2020	Change	2021	2020	Change
List Price	\$549,859	\$424,452	+29.5%	\$494,843	\$393,340	+25.8%
List Price/SqFt	\$231	\$176	+30.9%	\$207	\$165	+25.3%
Sold Price	\$557,616	\$422,162	+32.1%	\$512,173	\$388,018	+32.0%
Sold Price/SqFt	\$234	\$176	+33.2%	\$215	\$163	+31.6%
Sold Price / Orig LP	101.5%	99.7%	+1.8%	104.0%	98.8%	+5.2%
Days on Market	21	49	-57.3%	19	63	-70.3%

Median	This Month			Year-to-Date		
	Dec 2021	Dec 2020	Change	2021	2020	Change
List Price	\$499,970	\$380,298	+31.5%	\$440,000	\$356,053	+23.6%
List Price/SqFt	\$226	\$174	+30.2%	\$203	\$163	+25.0%
Sold Price	\$499,998	\$378,438	+32.1%	\$458,750	\$352,500	+30.1%
Sold Price/SqFt	\$230	\$174	+32.5%	\$211	\$161	+31.4%
Sold Price / Orig LP	100.0%	100.0%	+0.0%	101.3%	99.1%	+2.3%
Days on Market	8	12	-33.3%	6	33	-81.8%

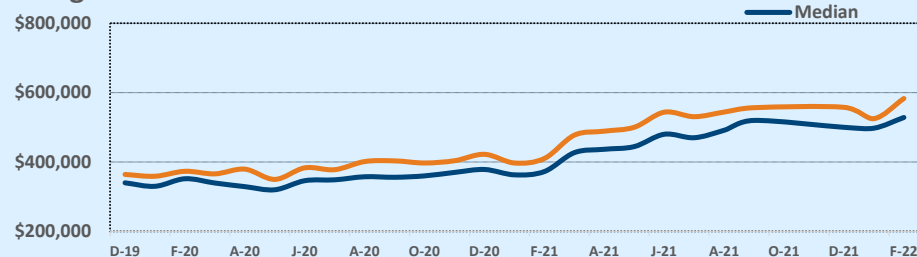
## Residential Statistics

## Independence Title

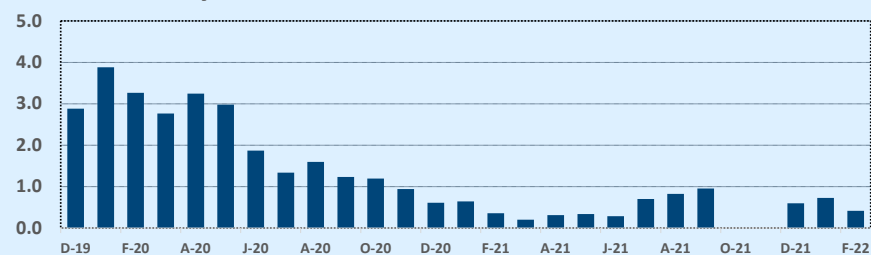
## December 2021

Price Range	This Month			Year-to-Date		
	New	Sales	DOM	New	Sales	DOM
\$149,999 or under	--	--	--	2	2	18
\$150,000- \$199,999	--	--	--	9	7	19
\$200,000- \$249,999	--	--	--	36	33	18
\$250,000- \$299,999	2	5	4	118	131	20
\$300,000- \$349,999	6	15	9	257	294	19
\$350,000- \$399,999	20	21	12	402	373	15
\$400,000- \$449,999	31	23	14	356	351	18
\$450,000- \$499,999	24	38	26	328	281	21
\$500,000- \$549,999	10	22	11	226	243	16
\$550,000- \$599,999	13	25	25	243	203	20
\$600,000- \$699,999	8	24	19	269	253	17
\$700,000- \$799,999	4	14	17	169	159	26
\$800,000- \$899,999	3	6	99	90	88	22
\$900,000- \$999,999	4	2	27	52	39	18
\$1M - \$1.99M	4	8	37	70	68	24
\$2M - \$2.99M	--	1	8	5	6	24
\$3M+	--	--	--	2	--	--
<b>Totals</b>	<b>129</b>	<b>204</b>	<b>21</b>	<b>2,634</b>	<b>2,531</b>	<b>19</b>

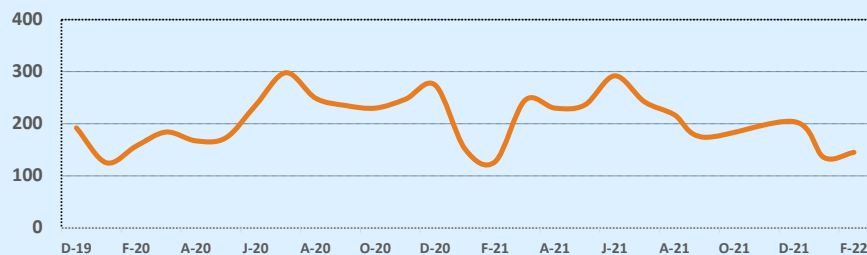
### Average & Median Sales Price - Last Two Years



### Months of Inventory - Last Two Years



### Number of Sales - Last Two Years



Based on information from the Austin Board of REALTORS® (alternatively, from ACTRIS). Neither the Board nor ACTRIS guarantees or is in any way responsible for its accuracy. The Austin Board of REALTORS®, ACTRIS and their affiliates provide the MLS and all content therein "AS IS" and without any warranty, express or implied. Data maintained by the Board or ACTRIS may not reflect all real estate activity in the market.